

# Remote Access Instructions to Ringling College Workstations

version 1.0a  
03/20/2020

## Overview

*NoMachine* is a program that connects your computer (laptop or desktop) to a *Windows or a Mac* workstation at Ringling College of Art and Design where you will run various applications such as *Zbrush*. The following instructions describe the process of setting up *NoMachine* on your computer. These instructions apply to both *Windows and Macs*.

## Prerequisites

1. A valid working Ringling College Network Account Password
2. Administrative rights on the computer to which you are installing the client
3. Connect your computer to Ringling College VPN (Virtual Private Network) service (<https://vpn.ringling.edu>). Please visit: <https://it.ringling.edu/documentation/virtual-private-network-vpn/> for instructions.

## Downloading and Installing

Go to [NoMachine Enterprise Client](#), download the software version appropriate to your computer (Windows or Mac), Mac is shown below, and then install the software (choosing all defaults settings).



## NoMachine Enterprise Client for Mac



Version:	6.9.2_1
Package size:	34.07 MB
Package type:	DMG
MD5 signature:	b6d4bd6c9c6a01aecfa6030dba34795a
For:	Mac Intel 64-bit OS X 10.7/10.8/10.9/10.10/10.11, macOS 10.12/10.13/10.14/10.15

Download

## Creating a Connection to Ringling College

You should only have to do this once.

- Run NoMachine Enterprise Client.
- Under *Recent Connections*, click *New*.

Recent connections

NOMACHINE

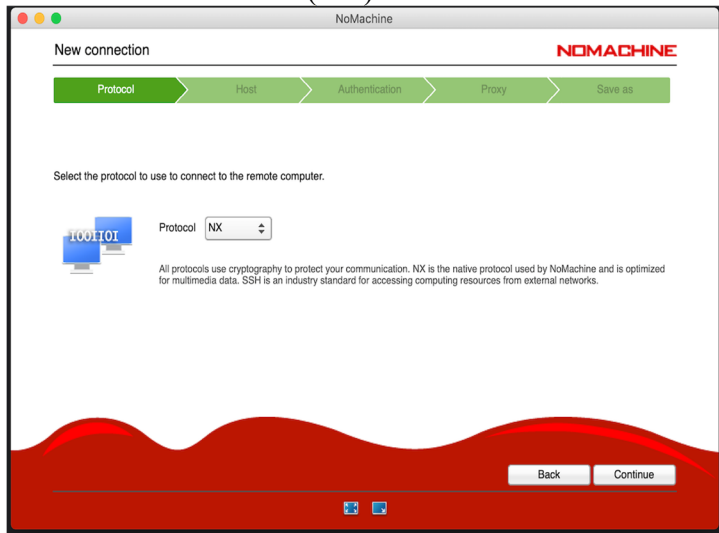


Select “New”:

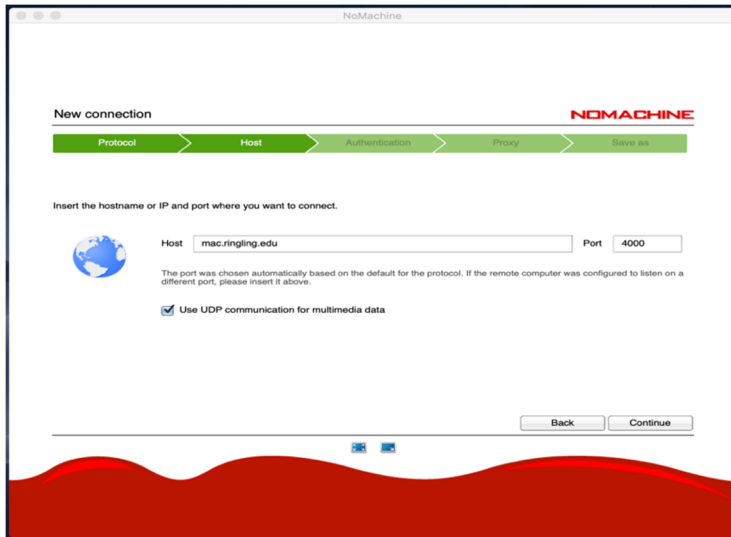


- Select *NX* for Protocol. Click *Continue*.

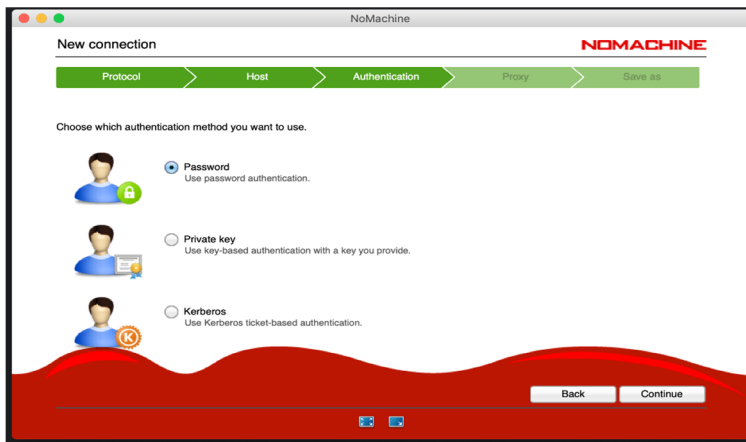
Leave Protocol default (*NX*):



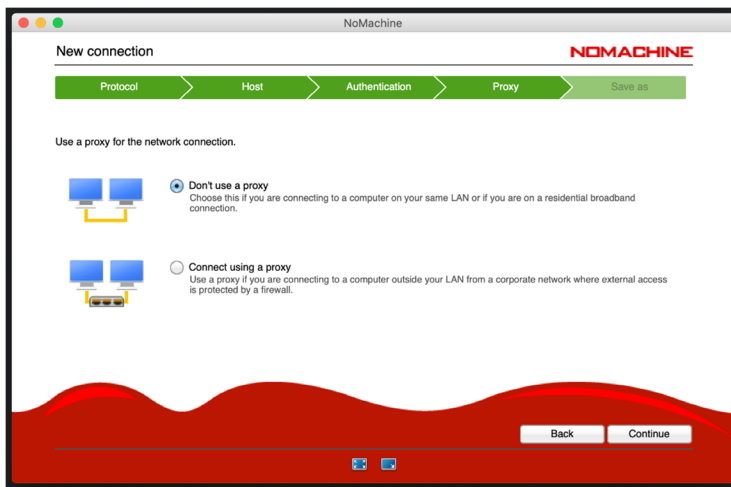
- Enter ***windows.ringling.edu*** for Windows and ***mac.ringling.edu*** for Macintosh Host. Click *Continue*.
- Keep default option for using UDP for multimedia checked.



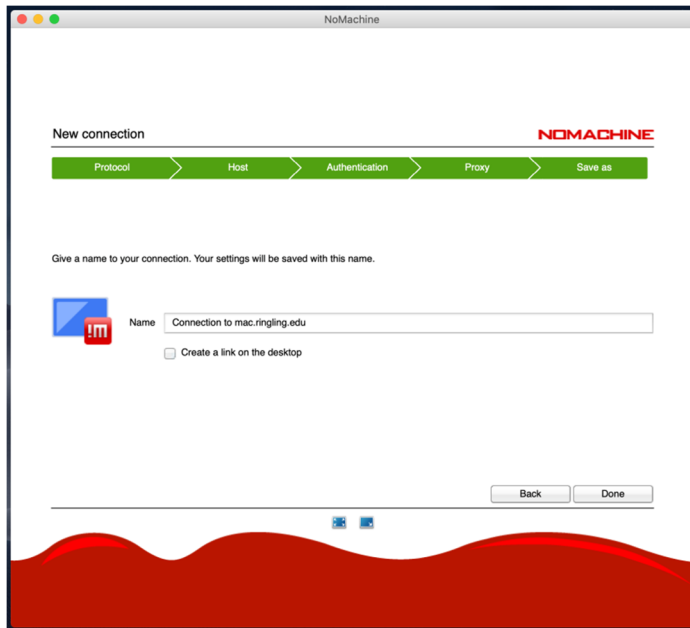
- Select *Password* for authentication. Click *Continue*.



- Select *Don't use a proxy*. Click *Continue*.



- If desired, modify the *Save As* name. Click *Done*.

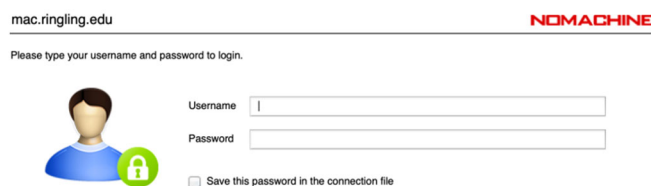


### Opening a Mac or Windows Desktop

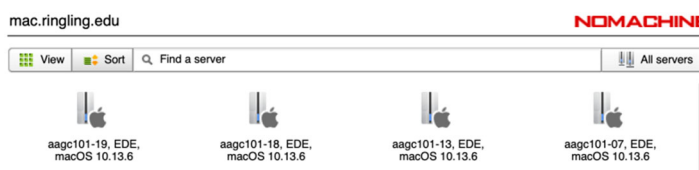
- Go to the *Recent Connections* NoMachine Enterprise Client window.
- Please notice your new connection in the Client window.
- Please note that Mac users will have mac.ringling.edu and Windows users will have windows.ringling.edu icons.



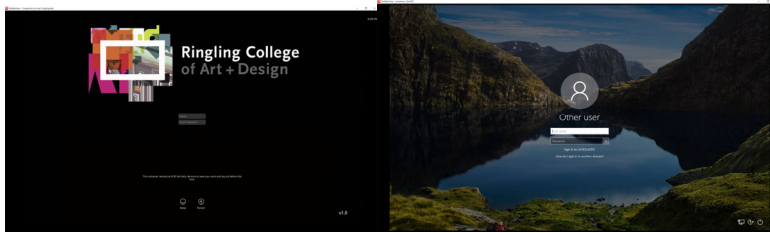
- Double-click on the appropriate icon to make a new connection.
- Enter your Ringling username and password. Click *OK*.



- Select a Windows or Mac Computer to connect (only Mac computer icons are shown below).
- Double-click to connect to a *Windows or Mac desktop*.



- Your *Windows or Mac desktop* will appear in moment.



### *Resizing the Desktop*

- Click and hold on a window corner, then drag the window to the desired size, making it fairly large enough to accommodate pop-up windows within your desktop.

### *Optimizing NoMachine Display Settings*

Each of the following optimization settings changes should be done while you have a running session.

- Simultaneously press and hold the Ctrl and Alt keys (on Macs, the Option key is the Alt key), then press the 0 (zero) key, and then release all three keys. A configuration menu panel should appear.
- Click the *Display* icon.
- Click the *Change settings* icon.
- Drag the *Display Quality* slider all the way to the right.
- Select the checkboxes for *Disable network-adaptive display quality* and *Disable multi-pass display encoding*.
- Windows users: Click *Done* three times.
- Mac users: Click *Done* twice, and then click the *Input* icon. Select the checkbox for *Emulate right mouse button*. Then, click *Done* twice.

### *Logging Out*

Once you are done with your session, PLEASE sign out or log out of the remote computer to end your session. This will free up the computer for other users who may be waiting, and not doing so can prolong this process.

- On Mac, click the Apple logo and “Log Out...”
- On Windows, click the Windows Start button, then your profile icon, and “Sign Out”